

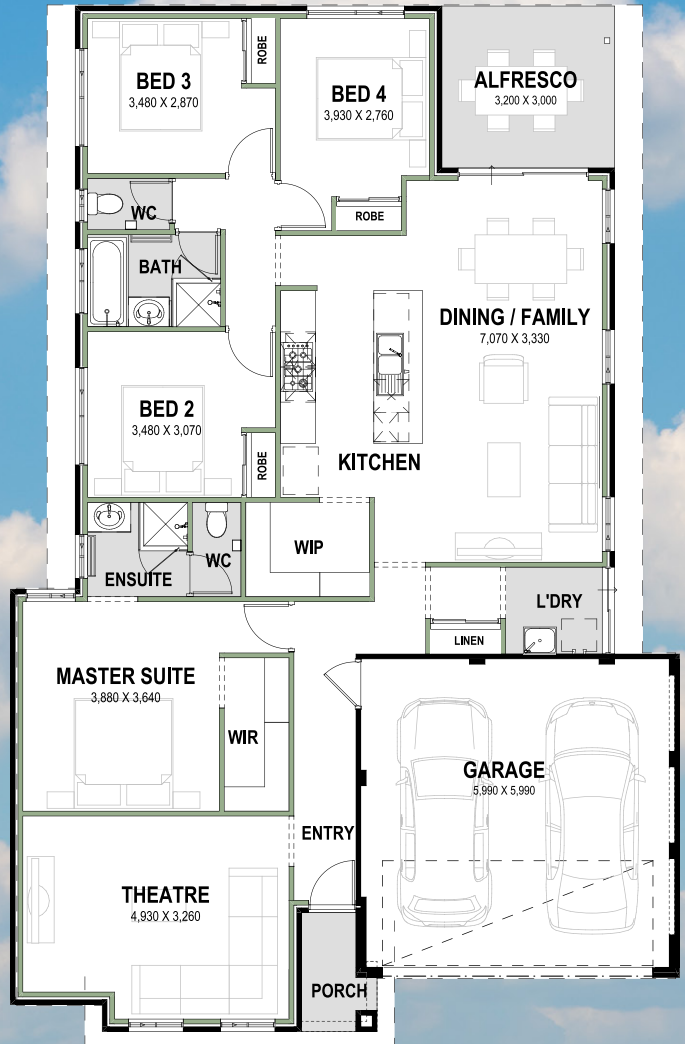
# The Adele

Say "Hello" to the Adele. Perfect for 12.5 x 25 blocks. This is an incredibly spacious home to suit this size block. Included are 4 bedrooms, 2 bathrooms, a large theatre and great living areas.

The home is designed in zones; with the master and theatre near each other at the front forming the parents 'wing' and the kids 'wing' to the rear. The kitchen is central in the home; easily accessible from all rooms, including the alfresco.

Great for people who love to entertain inside and out. As Adele says it will be great for 'Someone like you'.

4 x 2, theatre  
Floor area: 154.24m<sup>2</sup>  
Total area: 201.48m<sup>2</sup>



## Goodlife Homes Specifications

- Feature front elevation with texture coat render
- Plasterboard lined Verticore clay brick walls
- 2 x 600mm stainless steel electric ovens
- 900mm stainless steel gas cooktop and canopy rangehood
- Quality fixtures and fittings throughout the home
- 25 year non-transferable structural guarantee
- 12 months maintenance period
- Direct contact throughout construction with Site Manager
- Interior design consultation



9201 8550

Goodlife  
HOMES

goodlifelives.com.au